

Bass Trombone

AUDITION ETUDES

Prepared by: *Drew Zaremba*

Swing ♩ = 208+

4/4 *mf*

f

3/4

Ballad ♩ = 70

3/4 *mp*

swing!
f

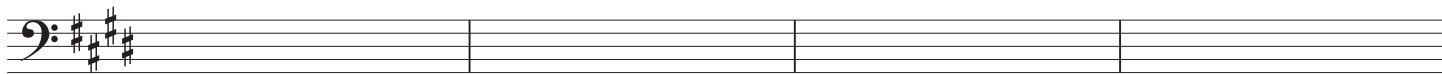
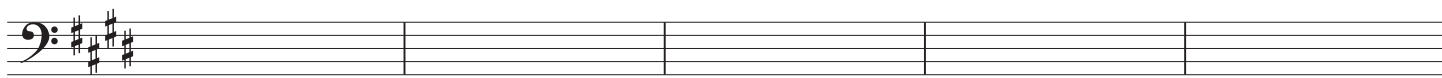
Swing 16ths ♩ = 132

4/4

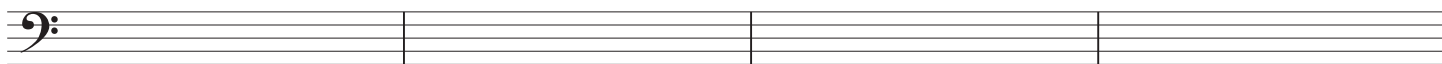
♩ = 60

Go very slow to your bottom note

mf



Bembé ♩ = 124



Ballad ♩ = 74

