

Trombone (lead)

AUDITION ETUDES

Prepared by: *Drew Zaremba*

Swing ♩ = 208+

Musical notation for the first etude, a Swing piece in 4/4 time with a tempo of 208+. The piece consists of three staves of music. The first staff begins with a dynamic marking of *f* and features a series of eighth and quarter notes with accents. The second staff continues with similar rhythmic patterns, including a *fp* marking and a crescendo hairpin. The third staff concludes with a 3/4 time signature change and a final *f* dynamic marking.

Ballad ♩ = 70

Musical notation for the second etude, a Ballad piece in 3/4 time with a tempo of 70. The piece consists of two staves of music. The first staff begins with a dynamic marking of *mp* and features a series of eighth notes with a slur. The second staff continues with a similar melodic line, including a *swing!* marking and a *f* dynamic marking at the end.

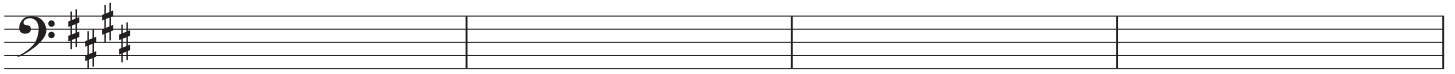
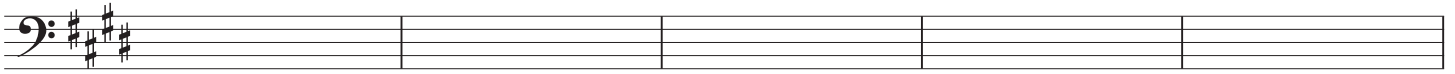
Swing 16ths ♩ = 132

Musical notation for the third etude, a Swing 16ths piece in 4/4 time with a tempo of 132. The piece consists of two staves of music. The first staff begins with a dynamic marking of *f* and features a series of sixteenth notes with a slur. The second staff continues with a similar rhythmic pattern, including a *f* dynamic marking at the end.

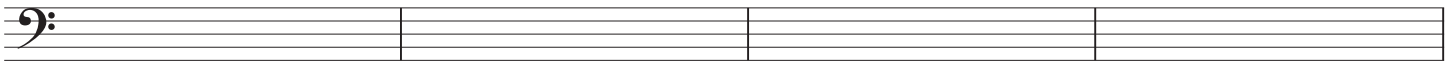
♩ = 60

Musical notation for the fourth etude, a piece in 4/4 time with a tempo of 60. The piece consists of one staff of music. It begins with a dynamic marking of *mf* and features a series of quarter notes with a slur. The piece concludes with a key signature change to three sharps (F#, C#, G#) and a final note with a slur and a fermata.

Go very slow to your top note (◡)



Bembé ♩ = 124



Ballad ♩ = 74

