

# Trumpet (Lead)

# AUDITION ETUDES

Prepared by: *Drew Zaremba*

**Swing** ♩ = 208+

Musical notation for the first etude, a 4/4 swing piece. It consists of three staves of music. The first staff starts with a dynamic of *f* and ends with *fp*. The second staff has dynamics *mp* and *f*. The third staff ends with a 3/4 time signature change.

**Ballad** ♩ = 70

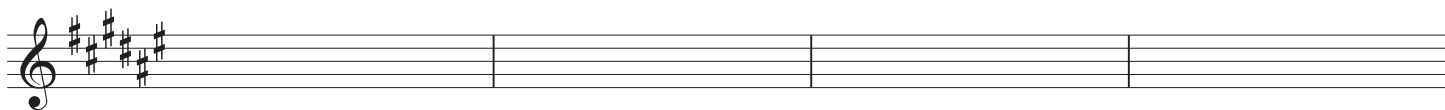
Musical notation for the second etude, a 3/4 ballad piece. It consists of two staves of music. The first staff starts with a dynamic of *mp*. The second staff has a dynamic of *f* and includes the instruction *swing!*.

**Swing 16ths** ♩ = 132

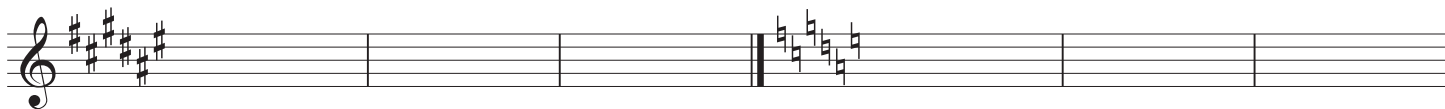
Musical notation for the third etude, a 4/4 swing piece with 16th notes. It consists of two staves of music. The first staff starts with a dynamic of *f*.

♩ = 60

Musical notation for the fourth etude, a 4/4 piece with a tempo of 60. It consists of one staff of music. It starts with a dynamic of *mf* and includes the instruction *Go very slowly to your top note.*



**Bembé** ♩ = 124



**Ballad** ♩ = 74

