

Trombone (section)

AUDITION ETUDES

Prepared by: *Drew Zaremba*

Swing ♩ = 208+

Musical notation for the first Swing etude in 4/4 time. It consists of three staves of music. The first staff begins with a dynamic marking of *f* and ends with *fp*. The second staff has a dynamic marking of *f*. The third staff concludes with a 3/4 time signature change and a double bar line.

Ballad ♩ = 70

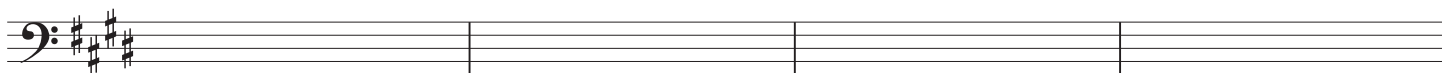
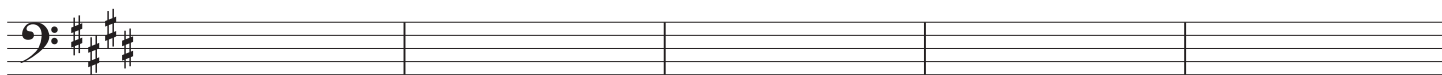
Musical notation for the second Ballad etude in 3/4 time. It consists of two staves of music. The first staff begins with a dynamic marking of *mp* and features a slur over a six-measure phrase. The second staff concludes with a dynamic marking of *f*, a 'swing!' instruction, and a 4/4 time signature change.

Swing 16ths ♩ = 132

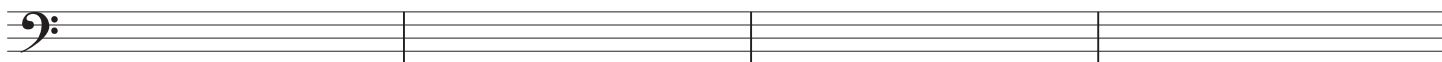
Musical notation for the third Swing 16ths etude in 4/4 time. It consists of two staves of music. The first staff begins with a dynamic marking of *f* and features a complex 16th-note rhythmic pattern. The second staff continues this pattern and concludes with a double bar line.

♩ = 60

Musical notation for the fourth etude in 4/4 time. It consists of one staff of music. It begins with a dynamic marking of *mf* and includes the instruction 'Go very slowly to your top note' above a long note. The piece concludes with a key signature change to three sharps and a double bar line.



Bembé ♩ = 124



Ballad ♩ = 74

