

# Trumpet (section)

# AUDITION ETUDES

Prepared by: *Drew Zaremba*

**Swing** ♩ = 208+

Musical notation for the first etude, a Swing piece in 4/4 time with a tempo of 208+. The piece starts with a dynamic of *f* and ends with *fp*. It features a melodic line with accents and a bass line with a *f* dynamic. The key signature has one sharp (F#).

**Ballad** ♩ = 70

Musical notation for the second etude, a Ballad piece in 3/4 time with a tempo of 70. It starts with a dynamic of *mp* and ends with *f*. The piece features a melodic line with a sixteenth-note run and a bass line with a *f* dynamic. The key signature has one sharp (F#).

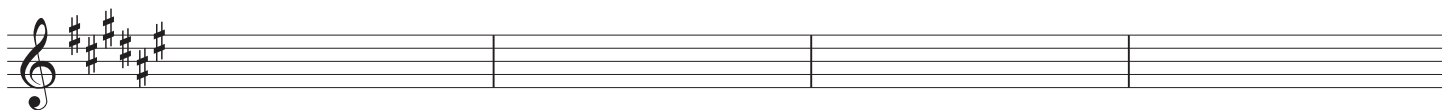
**Swing 16ths** ♩ = 132

Musical notation for the third etude, a Swing 16ths piece in 4/4 time with a tempo of 132. It starts with a dynamic of *f* and ends with *f*. The piece features a melodic line with sixteenth-note runs and a bass line with a *f* dynamic. The key signature has one sharp (F#).

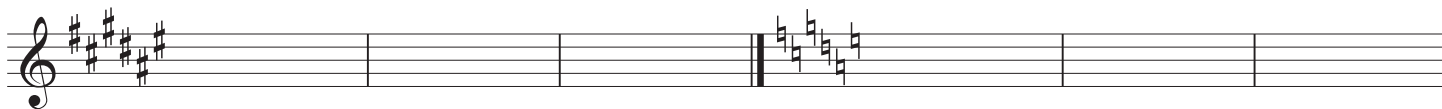
♩ = 60

Musical notation for the fourth etude, a piece in 4/4 time with a tempo of 60. It starts with a dynamic of *mf* and ends with a key signature change to three sharps (F#, C#, G#). The piece features a melodic line with a slur and a *mf* dynamic.

Go very slowly to your top note.



**Bembé** ♩ = 124



**Ballad** ♩ = 74

