

Bass Trombone

SYMPHONY N° 3

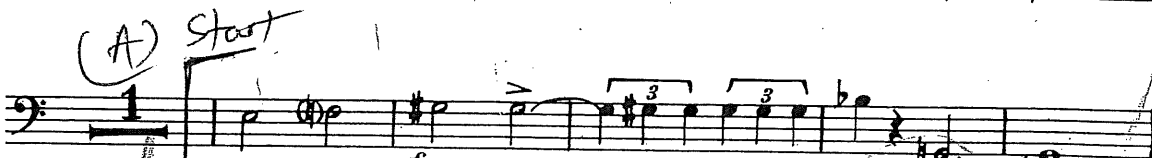
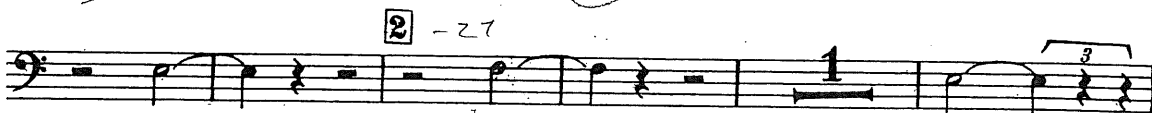
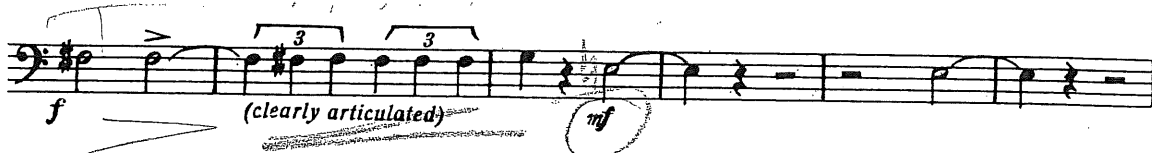
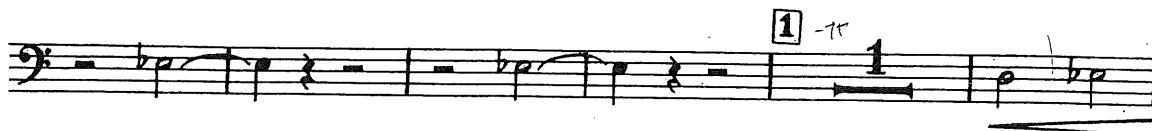
FOR BAND

3rd TROMBONE

$\text{♩} = 104-108$ I.

Allegro energico

VITTORIO GIANNINI



1st mut. cont. ...

(B)

2 (♩ d=80)

8 *calmandosi* 86 **3rd TROMBONE**
 8 1/2 *Tranquillo (pochiss. meno mosso)*
 Soli

Start

p espressivo

mf

10 101

Stop

dim. *p*

a tempo

(C)

(♩ d=104-108) **3rd TROMBONE**

18

Start

19 - 196

cresc.

Stop

Tempo I.

ff

(D)

30 *poco tratt.* Tempo I.

31 309

Start (♩ d=104-108)

32 319

poco tratt. a tempo

Water

2

3rd TROMBONE

116

Allegretto

III. $\left(\frac{6}{8} \text{ } d.c. = 112-116\right)$

Bass Clar. *mp*

11 1 10 10 8

21 2 7 7

3 47 4 2

Start ↓

p *sonoro e dolce sempre* *mf*

5

6-67

7

3

3rd TROMBONE

JW (♩ = 178) **IV.**

Allegro con brio

stall

GRAND

4th mot. cont. (♩=178)

Soli

13 757

Staff f (D)

ff mf cresc.

14 767

ff mf p

Muse

15 Cantabile 757

mf p mf f ff

stop

16 767

II. mp

mp

17 Tempo I.

mp f in 2

start

18 787

ff f ff mf ff

ff > mf ff ff mf ff ff mf

off. 3

19 797

ff ff mf cresc. f

Puoli

ff

stop